

## 2000 Series

Built for **speed, accuracy and performance at an affordable price**, the robust 2000 series of hand-held digital thermometers provides a range of enhanced features to meet the changing demands of both **industrial and food environments**.

The rugged 2000 Series provides precise, **stable readings and high accuracy** even in the **harshest of environments**. They are **simple to operate, fast, reliable and built to last**. In this unique range we can offer advanced features such as dual input instruments which combined with interchangeable probe options makes this series a leader in its field. Optional coloured rubber boots add protection and style to these instruments.

### General Specification

<b>Resolution:</b>	0.1° from -199.9°C to +199.9°C -199.9°F to +392.0°F 1°C elsewhere
<b>Ambient Operating Temperature:</b>	-10°C to +50°C/+14°F to +122°F (ambient)
<b>Battery Type:</b>	Two AA or equivalent cells (not supplied)
<b>Battery Life:</b>	Typically 500 hours
<b>Low Battery Check:</b>	Symbol appears on display
<b>Display:</b>	12.7mm / 0.5" custom L.C.D.
<b>Sensor Open Circuit:</b>	Indicated by 'O-C' on display
<b>Overrange/Underrange:</b>	'Out' displayed
<b>Cold Junction Compensation:</b>	Yes
<b>Environmental Specifications:</b>	IP65 (IP67 optional)
<b>Auto Switch-Off Time:</b>	12 minutes
<b>Dimensions:</b>	155 x 67 x 40mm/6.1 x 2.6 x 1.6"
<b>Weight:</b>	180g/6.4oz



2000T Model

For other options, please contact us [digitronsales@rototherm.co.uk](mailto:digitronsales@rototherm.co.uk) or +44 (0)1656 740551

### Key Features and Benefits

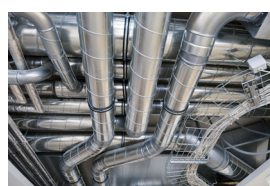
- Long battery life – typically 500 hours
- Accurate performance – 0.2% of reading
- Robust Case – Ensuring long life in demanding and harsh environments
- Selectable auto switch-off – saves on operational costs
- Automatic zero calibration – for added accuracy

### Optional Extras

- 2000BT – Protective Rubber Sleeve
- Carry Case
- Various Probe Options
- Calibration Certificate

### Main Applications

A **world leader** in digital thermometers, Rototherm has become the standard for accurate and reliable measurement across the following industries:



Industrial



Food & Beverage

## Model Specification

Model Options	2000T <i>(Refer to IEC 60584)</i>	2006T <i>(Refer to IEC 60584)</i>	2024T <i>(Refer to IEC 751)</i>	2038T <i>(Refer to IEC 60584)</i>
Sensor Type	K	T	Pt100	K, T, JNRS
Connector Type	2 pin mini	2 pin mini	TCM screw	2 pin mini
°C/°F Function*			•	•
Hold Function	•	•	•	•
Range Lock			•	•
Max/Min			•	•
Averaging			•	
Differential Input				•

Instrument Accuracies (All $\pm 1$ Digit) <i>(Excluding probe error)</i>	<b>2000T</b>	0.1% rdg $\pm 0.2^\circ\text{C}/0.4^\circ\text{F}$ above $-100^\circ\text{C}/-148^\circ\text{F}$ 0.5% rdg $\pm 0.2^\circ\text{C}/0.4^\circ\text{F}$ below $-100^\circ\text{C}/-148^\circ\text{F}$		
	<b>2006T</b>	$\pm 0.2^\circ\text{C}/0.4^\circ\text{F}$ over range $-20^\circ\text{C}$ to $+70^\circ\text{C}/-4^\circ\text{F}$ to $+158^\circ\text{F}$ $\pm 0.1\%$ rdg $\pm 0.2^\circ\text{C}/0.4^\circ\text{F}$ elsewhere		
	<b>2024T</b>	$\pm 0.2\%$ rdg $\pm 0.1^\circ\text{C}/0.2^\circ\text{F}$ over range $-150^\circ\text{C}$ to $+800^\circ\text{C}/-238^\circ\text{F}$ to $+1472^\circ\text{F}$		
	<b>2038T</b>	0.1% rdg $\pm 0.2^\circ\text{C}/0.4^\circ\text{F}$ above $-100^\circ\text{C}/-148^\circ\text{F}$ 0.5% rdg $\pm 0.2^\circ\text{C}/0.4^\circ\text{F}$ below $-100^\circ\text{C}/-148^\circ\text{F}$		
Range	<b>2000T</b>	$-200^\circ\text{C}$ to $+1350^\circ\text{C}/-328^\circ\text{F}$ to $+2462^\circ\text{F}$	<b>2038T T</b>	$-250^\circ\text{C}$ to $+400^\circ\text{C}/-418^\circ\text{F}$ to $+752^\circ\text{F}$
	<b>2006T</b>	$-250^\circ\text{C}$ to $+400^\circ\text{C}/-418^\circ\text{F}$ to $+752^\circ\text{F}$	<b>2038T J</b>	$-750^\circ\text{C}$ to $+750^\circ\text{C}/-1318^\circ\text{F}$ to $1382^\circ\text{F}$
	<b>2024T</b>	$-150^\circ\text{C}$ to $+800^\circ\text{C}/-238^\circ\text{F}$ to $+1472^\circ\text{F}$	<b>2038T N</b>	$-200^\circ\text{C}$ to $+1300^\circ\text{C}/-328^\circ\text{F}$ to $+2372^\circ\text{F}$
	<b>2038T K</b>	$-200^\circ\text{C}$ to $+1350^\circ\text{C}/-328^\circ\text{F}$ to $+2462^\circ\text{F}$	<b>2038T S</b>	$0^\circ\text{C}$ to $+1750^\circ\text{C}/+32^\circ\text{F}$ to $3182^\circ\text{F}$

## Technical Certification

- Certificate of Conformity
- Factory Test Certificate
- Factory Calibration Certificate

## Export Documentation

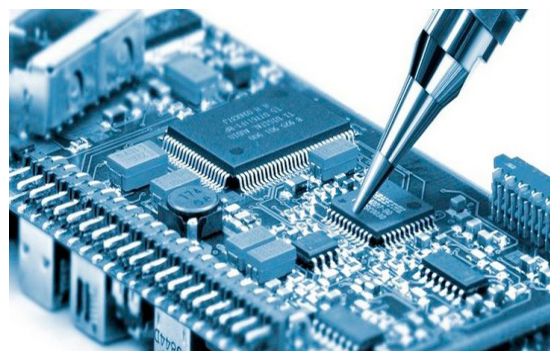
- Certificate of Origin
- EUR1
- ATR

## Calibration and After-Sales Support

- Fully trained field service personnel
- Use of UKAS certified calibration equipment
- 5 day turnaround
- Fixed pricing
- Approved manufacturer parts
- Full post-service reports
- 12 month warranty



ISO9001:2008  
FM11958



For more information, please contact our service team  
[digitronservice@rototherm.co.uk](mailto:digitronservice@rototherm.co.uk)