

ThermaCheck

Multi-function Thermometer with Inbuilt Data Logging & Graphing



SPECIFICATIONS

- Temperature measurement range -270 to +1300°C (-454 to +2372°F) (probe dependent)
- Can log over 65,500 readings per file
- Two modes: 'Data Logging' and 'Measurement'
- Capacity to store up to 100 log files
- Configurable high and low alarms with indicator
- Audible Alarms via built-in Sounder

The ThermaCheck is a robust, easy to use, multi-function hand-held thermometer that takes and records temperature readings via the attached thermocouple probe.

The ThermaCheck has two main functions: Data Logging and Measurement.

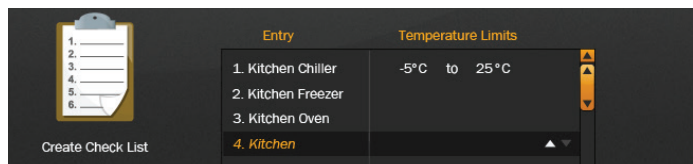
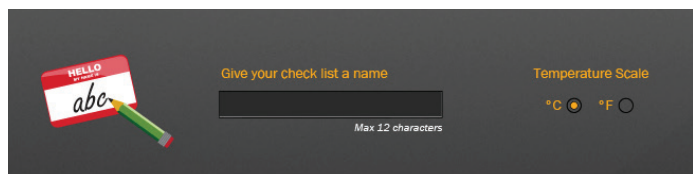
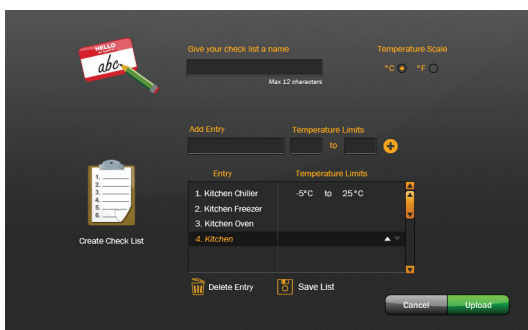
Data Logging Mode: When in 'Data Logging' mode the ThermaCheck can be set-up and left to take temperature readings at predetermined intervals for any desired length of time. All data logging parameters are set using the ThermaCheck's touchscreen interface, with custom settings such as: sample rate, high & low alarms and delayed start if you would rather begin logging at a later time or date.

All readings are saved to a file with a date and time stamp in .csv or .txt format for up to 65,536 readings.

Measurement Mode: When in 'Measurement' mode the ThermaCheck can be used in two ways: 'Spot Checks' or 'Predefined Checklists'.

Spot Check Mode: When in 'Spot Checks' mode the ThermaCheck can be used as a thermometer to manually capture temperature readings displayed on screen. A new measurement is taken each time the user presses the on-screen 'RECORD' button. Over 65,000 spot measurements can be recorded in each file.

Checklist Mode: When in 'Checklist' mode the ThermaCheck can be used as an electronic checklist to do spot temperature checks on a predefined list of items. The checklists are configured using our FREE and simple ThermaCheck software allowing users to define a long list of checks with custom settings such as: checklist name, temperature scale, items to check and acceptable temperature limits.



Recorded data files can be downloaded to a PC via USB using the ThermaCheck software, where data can be viewed as text, in Excel®, or as a graph (depending on file format).

The unit is compatible with any J, K, N and T type thermocouple probes. The protective boot can be removed for cleaning and is dishwasher safe.

ThermaCheck

Multi-function Thermometer with Inbuilt Data Logging & Graphing



SPECIFICATIONS

Probe measurement range	-100 to +700°C (-148 to +1292°F) K-type (supplied) -200 to +1350°C (-328 to +2462°F) K-type -200 to +1190°C (-328 to +2174°F) J-type -200 to +390°C (-328 to +734°F) T-type
Internal resolution	0.1°C (0.1°F)
Accuracy (overall error)	±1.5°C (±3°F) (data logger only - thermocouple error not included)
Logging rate	User selectable between 1 second & 12 hours
Operating temperature range	0 to +50°C (+32 to +122°F) (data logger only)
Battery Life	8 Hours (at 25°C, 1 minute logging rate and in power-save mode)
Readings	65,536
Dimensions	107 x 68 x 19mm (4.21 x 2.67 x 0.74")

Warning - Do not exceed operating temperatures

ACCESSORIES

Spike Probe

INCLUDED IN THE BOX

ThermaCheck

Spike Probe

USB Cable

WARNING

The ThermaCheck is a hand-held instrument which can be freely used with any compatible thermocouple, whilst being battery-powered. The instrument can also be used to take measurements while being permanently powered from a mains-derived power supply (available separately). In these circumstances, we recommend the use of an ungrounded (isolated) thermocouple, to avoid measurement instability caused by Earth-loops.